



## PROFESSIONAL PORTRAITS

give a great first impression for college applications, scholarships, or resumes.

The photo backdrop will be grey so please plan your outfit accordingly. The picture will only feature your top half, so no need to wear dress bottoms.

**February 22 & 23**  
**10 am - 1 pm**

West Conference Room  
Grand Island Senior High



### About Tally

Tally Creative is a full-service brand development agency located in the heart of Grand Island's historic Railside district.



## GISH STUDENT PROFESSIONAL PORTRAITS

**February 22 & 23**  
**10 am - 1 pm**

West Conference Room  
Grand Island Senior High





## Clothing Do's



**CLOTHING:** Wear a dress shirt, polo, or nice sweater to show your professionalism.



**COLOR:** Solid colors or larger prints work best for clothing. Blue, Green, Red, Maroon, or Purple photograph well.

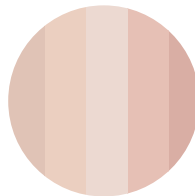


**ACCESSORY:** Simple jewelry, bow-ties, or ties can be great extra additions to your outfit.

## Clothing Don'ts



**CLOTHING:** For a professional image, please avoid wearing low necklines, sleeveless shirts, and clothing that has words or logos on it.



**COLOR:** Stay away from wearing bright or skin tone colors as well as small prints.



## Hair & Face



**HAIR:** Wear your everyday hair to look professional and polished.



**GLASSES:** If you wear glasses 100% of the time, please wear them for the portrait.



**MAKEUP:** Wear your everyday makeup look along with your favorite lipstick or chapstick.

